

LEGEND:

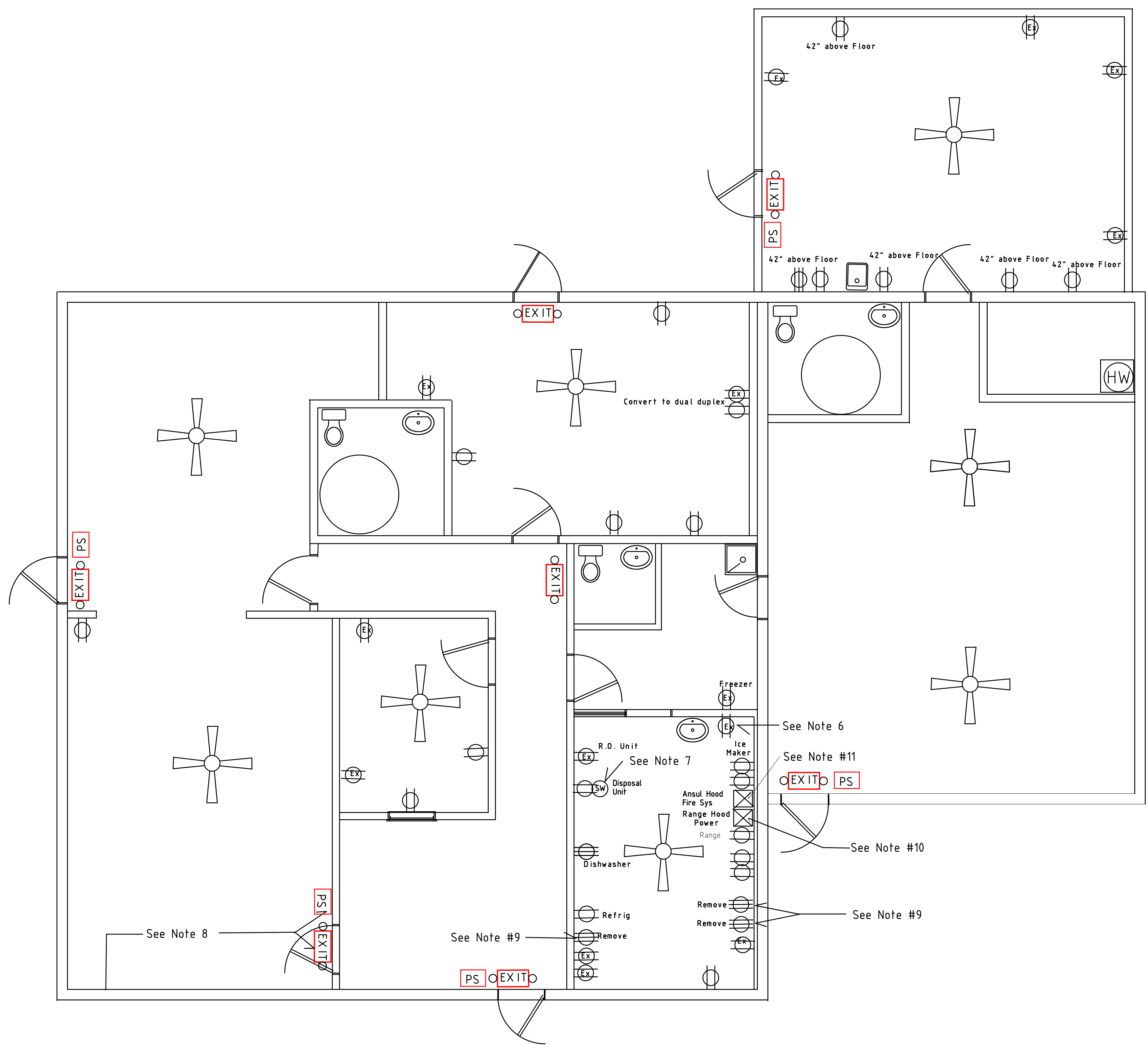
- 110vac Duplex Receptacle
- Existing 110vac Duplex Receptacle
- 220vac Receptacle

NOTES:

- 1 - ALL WORK TO BE PERFORMED IN ACCORDANCE WITH FEDERAL-STATE-LOCAL REGULATIONS AND IN COMPLIANCE WITH INDUSTRY STANDARDS.
- 2 - Install Ceiling Fans Supplied By Owner. Total of 8
- 3 - Ex = Existing plugs, etc.
- 4 - Existing Exit Signs with Emergency lights and Pull Station
- 5 - Existing Ventilation provided by Central Gas Furnace and HVAC System.
- 6 - Change existing single outlet to standard Duplex outlet.
- 7 - Disposal Duplex outlet must be switchable
- 8 - Remove Existing Exit Light and Pull-Station from Former Exit Door Location and Install Exit Light and Pull Station according to Applicable Codes to New Location.
- 9 - Remove Existing 60amp Terminal Box(s). Remove associated 60 amp Circuit Breakers. All abandoned wiring must be secured per NEC.
- 10 - Hood SFS Supply Fan rated at 1/3hp 115/230 vac. Exhaust Fan rated at 1/4hp 115 vac 2.6 FLA.
- 11 - Ansul Fire Suppression System electrical supply must comply with all applicable NFPA and NEC codes and regulations.

REVISION FOR CODE COMPLIANCE
BY THE VALUE OF THE WORK

ELECTRIC COMPLIANT 6/21/2021



Electrical Modifications and Emergency Exit Signs with Lighting

1/4" = 1'-0"

637 SUDDERETH



GRAYSON HARRIST
Architech - Contractor
806 - 543 - 7246

- 1 - All Work Shall Be Performed By Licenced Contractor And Meet Current Building And ADA Codes.
- 2 - Contractor To Verify Existing Site Conditions And Report Any Discrepancies Between The Drawings and Site Conditions To The Architech To Determine The Best Course Of Action. Any Work By The Contractor After Discrepancies Are Discovered Shall Be Done At Contractors Risk.
- 3 - Occupant Loads Listed Were Determined By Local Building Officials.
- 4 - Exit Sign Number And Location Were Inspected By Local Building Officials.
- 5 - All Structural Items Shall Be Engineered According To Local Building Codes And Conditions.
- 6 - Wall Mounted Fire Extinguishers Shall Be Installed Per Current IBC.

Designed: Sw	Date: 7/2/21	Scale: 1/4" = 1'-0"	Sheet: 5-17-21 A	Customer/Project: HMYP - Remodel
Relocated Emergency Exit Lights Added Note		Released: 5-17-21 A		
DISCREPTION		BY DATE REV		
Revision records				

Electrical Modifications with Emergency Exits and Lighting locations
High Mountain Youth Project
637 Suddereth